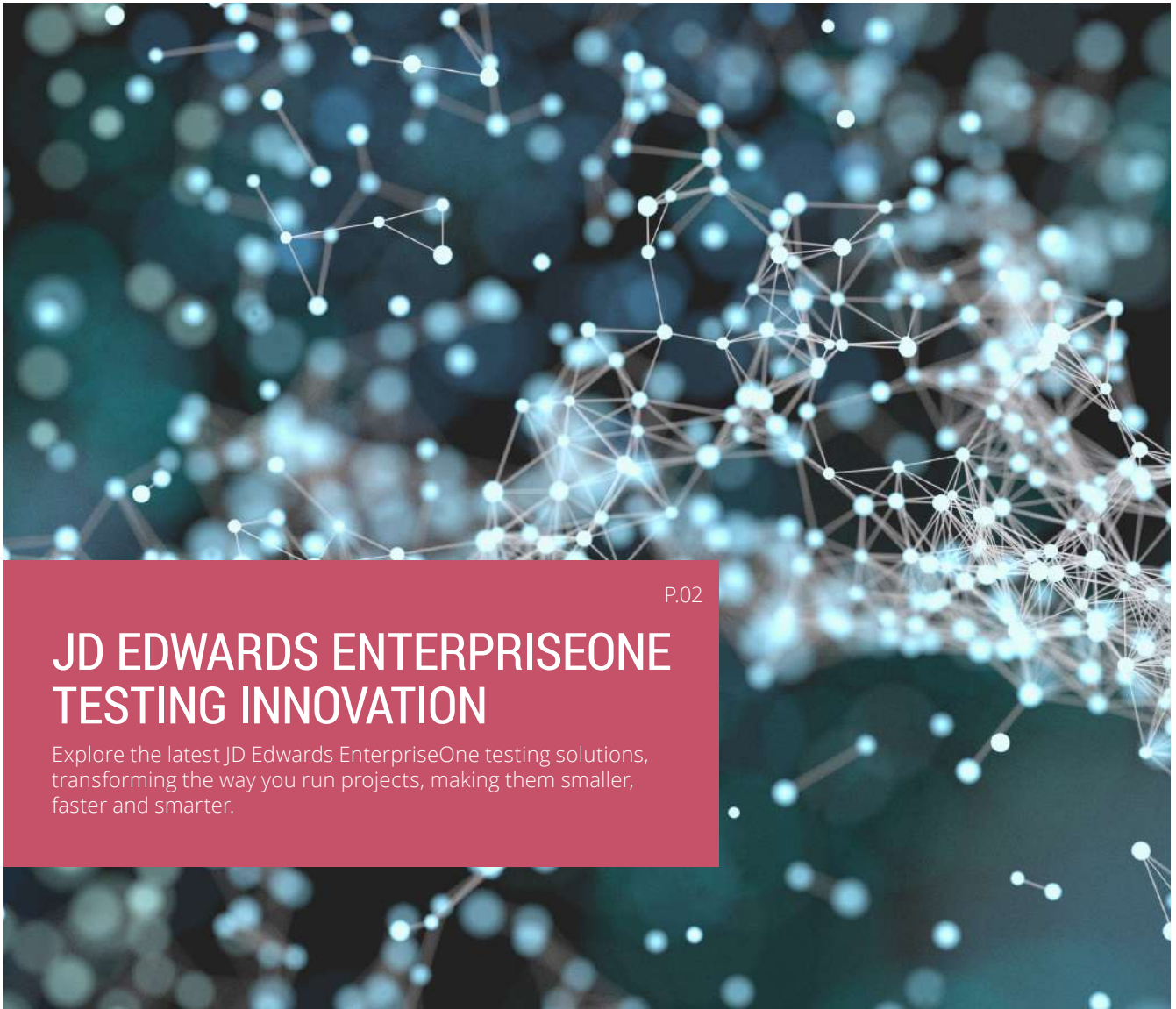


# DIMENSION

From DWS

ISSUE # 5



P.02

## JD EDWARDS ENTERPRISEONE TESTING INNOVATION

Explore the latest JD Edwards EnterpriseOne testing solutions, transforming the way you run projects, making them smaller, faster and smarter.

P.03

## ORCHESTRATING SUCCESS WITH JD EDWARDS

Review the latest developments Oracle JD Edwards has made to the Orchestrator tool and the positive implications of these for users.

P.03

## TAKING THE STRESS OUT OF STRESS TESTING

When dealing with ERP and other business-critical applications, a lot of time and effort is spent on functional testing. However, this is only part of the equation.

P.04

## CONVERTING VISION INTO VALUE FOR PRINTPACK

See how DWS reduced Printpack's modified footprint by 42%, saving over 419 days of development effort while upgrading to JD Edwards EnterpriseOne 9.2.

# JD EDWARDS ENTERPRISEONE TESTING INNOVATION

**W**hen it comes to enterprise software projects, testing can account for up to 65 % of the overall time and effort. It might seem like a strange question, but why do we test?

**At its heart, change involves risk and testing is all about managing and mitigating risk.**

From an enterprise applications software perspective, we carry out functional testing to eliminate unwanted events that negatively impact on either system performance or user experience.

What constitutes an unwanted event? It's easy to say anything that doesn't consistently deliver the desired outcome, but we prioritise those that result in an unacceptable impact, or those that occur with an unacceptable frequency.

Physical processes have a simple input and output relationship – you

put a combination of elements in one end and something predictable comes out the other. If what comes out the other end is not what was expected, there are typically few variables to be considered.

Software doesn't work that way. When it fails it tends to do so in unexpected and "mysterious" ways. The more complex the business process being managed by the software, the more difficult it can be to discover the reason for the error.

Today the nature of many complex and sophisticated organizations and industries means that even the smallest failure in one system can have a huge impact.

In response to the demand for greater agility and continuous innovation amongst its user community, Oracle JD Edwards has adopted a strategy of continuous delivery.

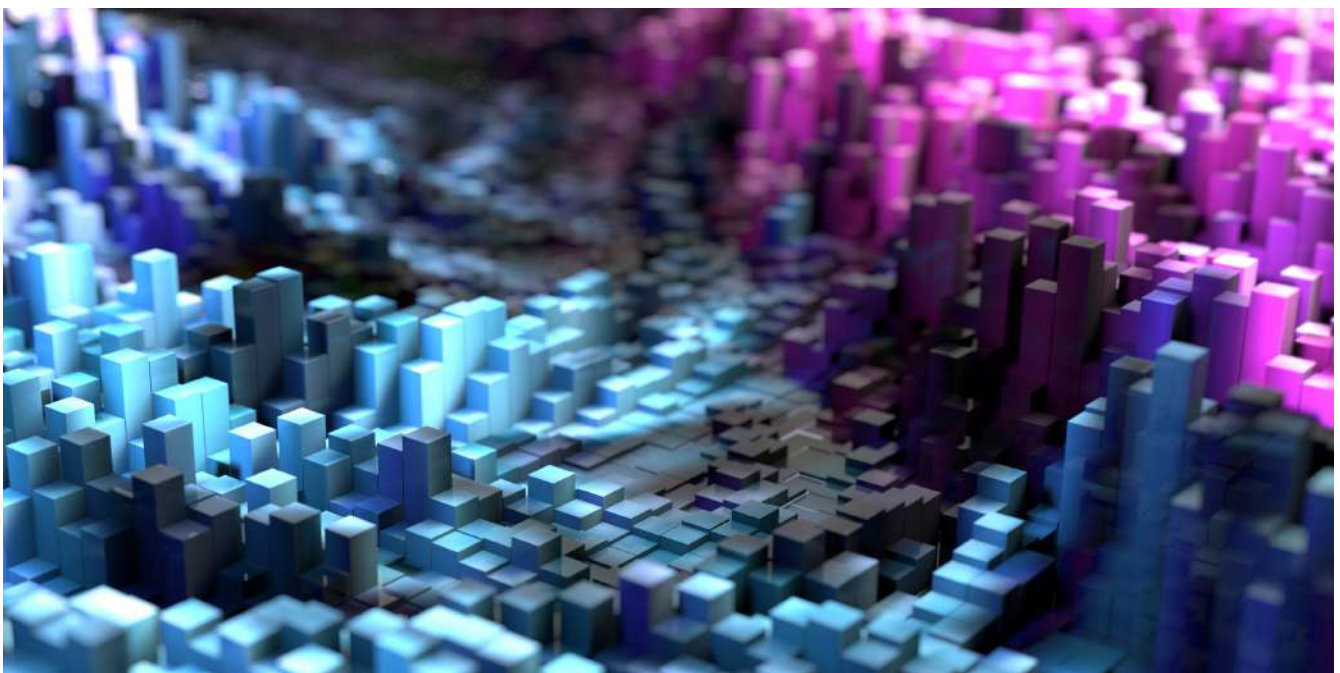
This strategy is having an impact on the way organizations manage enterprise software change events, and how they go about testing.

**Software testing acts like an insurance policy and is a key component of quality assurance.**

As companies move to stay code-current (once on release 9.2), projects will become smaller, less risky and more frequent. This change is driving demand for more efficient and effective ways to test.

DWS has responded to this changing landscape by developing a suite of innovative JD Edwards EnterpriseOne (JDE E1) testing solutions, all designed to help businesses transform the way they run projects; making them **smaller, faster and smarter.**

Read the JD Edwards EnterpriseOne Testing Innovation Product Guide here: [www.dws-global.com/resources/](http://www.dws-global.com/resources/)



# ORCHESTRATING SUCCESS WITH JD EDWARDS

Following Oracle's move to a Continuous Delivery model in 2017, we've seen a host of new product features and developments. According to the annual Quest Community survey, 57% of JDE E1 users claim their company has plans to begin using Orchestrator in the near future.

The last twelve months have demonstrated the JDE strategy of continuous evolution can deliver genuine value to the installed base. Further developments for the Orchestrator tool are planned for the coming year, adding further features and integrations.

So, what can users expect?

- Expanded Inputs and Outputs
- Improved Messages and Notifications
- Capability to launch orchestrations from anywhere in JD Edwards
- Multiple Output Steps for Application Stack

Find out more here: [www.dws-global.com/category/latest-news/](http://www.dws-global.com/category/latest-news/)



## TAKING THE STRESS OUT OF STRESS TESTING

When dealing with ERP and other business-critical software applications, a lot of time and effort is spent on functional testing to ensure that systems perform as expected; that a given input results in a given output.

However, functional testing (i.e. unit, system and integration testing) alone is not enough to test the resilience and predictability of your system. Simply running a sequence of functional tests is not an accurate reflection of the real-world demands that are likely to be placed upon your systems.

### Go live with confidence

That's why we developed Dimension LoadTest™ – enabling a single user to define, execute and monitor load in an JDE E1 environment.

Dimension LoadTest is a powerful, accessible and easy to use tool, allowing customers to easily simulate load and do the work of hundreds of users in a fraction of the time, **reducing overall test resource by more than 95%!**

**"We would not have gone live on EnterpriseOne 9.2 (migrating from World Software) with the level of confidence that we had without using Dimension LoadTest."** Kevin Criswell, Application

Services Manager, MYR Group Inc.

Designed with users in mind, Dimension LoadTest allows any experienced System Administrator/CNC to setup, create, run and monitor load tests to effectively stress test JDE E1 applications.

Discover how Dimension LoadTest can add value to your organizations JD Edwards EnterpriseOne performance testing: [www.dws-global.com/dimension-loadtest/](http://www.dws-global.com/dimension-loadtest/)



**LOADTEST**



## CONVERTING VISION INTO VALUE FOR PRINTPACK

**E**stablished in 1956, Printpack is one of the world's largest packaging companies. Specializing in the food, beverage, pharmaceutical, and agricultural industries, it employs over 3,200 people across 19 manufacturing plants in the US, Mexico and China.

Printpack has been using JD Edwards since 2007, with EnterpriseOne (E1) initially supporting manufacturing operations, human resources and payroll. By 2012, the JDE General Ledger was established as their system of record.

Printpack upgraded from E1 release 8.11 to 9.1 in 2013. Following the upgrade, E1 was implemented across the entire manufacturing estate; providing support to over 3,600 users.

### The challenge

With JDE E1 implemented across all 19 manufacturing plants, Printpack had accumulated over 8,000 modified objects. Upgrading to 9.2 as part of a Digital Transformation project, Printpack was looking to reduce this modified footprint and realize time and resource savings on the technical retrofit elements of the upgrade.

### The solution

Printpack leveraged insight from Dimension Analyze™ to clearly identify which modified objects would require retrofitting. This insight was used to identify the best upgrade approach and enabled the delivery of a Dimension Professional™ project at a fixed price and timeline for the upgrade.

### The result

Dimension Analyze identified over 3,000 modified objects that did not require retrofitting, reducing Printpack's modified footprint by 42% and saving over 419 days of development effort. All development work was delivered on budget and 2 weeks ahead of schedule, with zero defects reported.

See the full case study here: [www.dws-global.com/resources/](http://www.dws-global.com/resources/)

**“SwifTest has had a major impact on testing for Printpack. I'd conservatively estimate we've saved 25% on the time taken to carry out repetitive functional tests”.**

Christel Craig, Manager Business Systems, Printpack

## About DWS

Since 1998, we have been providing development and technical services to organizations looking to customize, integrate, extend, upgrade or support implementations of EnterpriseOne. We also sell EnterpriseOne testing products that leverage our deep domain expertise and help customers run smaller, faster and smarter projects.

DWS serves a global client base using proven methodologies and proprietary DWS Dimension™ tools. Our best-practice approach and eye for detail help us deliver products and services that save time and money and continually drive down your TCO for JD Edwards.

For further information please visit our website, or contact us:

UK: +44 (0) 1494 896 600    US: +1 888 769 3248    ANZ: +64 9427 9956  
[sales@dws-global.com](mailto:sales@dws-global.com)    [www.dws-global.com](http://www.dws-global.com)

ORACLE

Gold  
Partner  
Cloud Standard