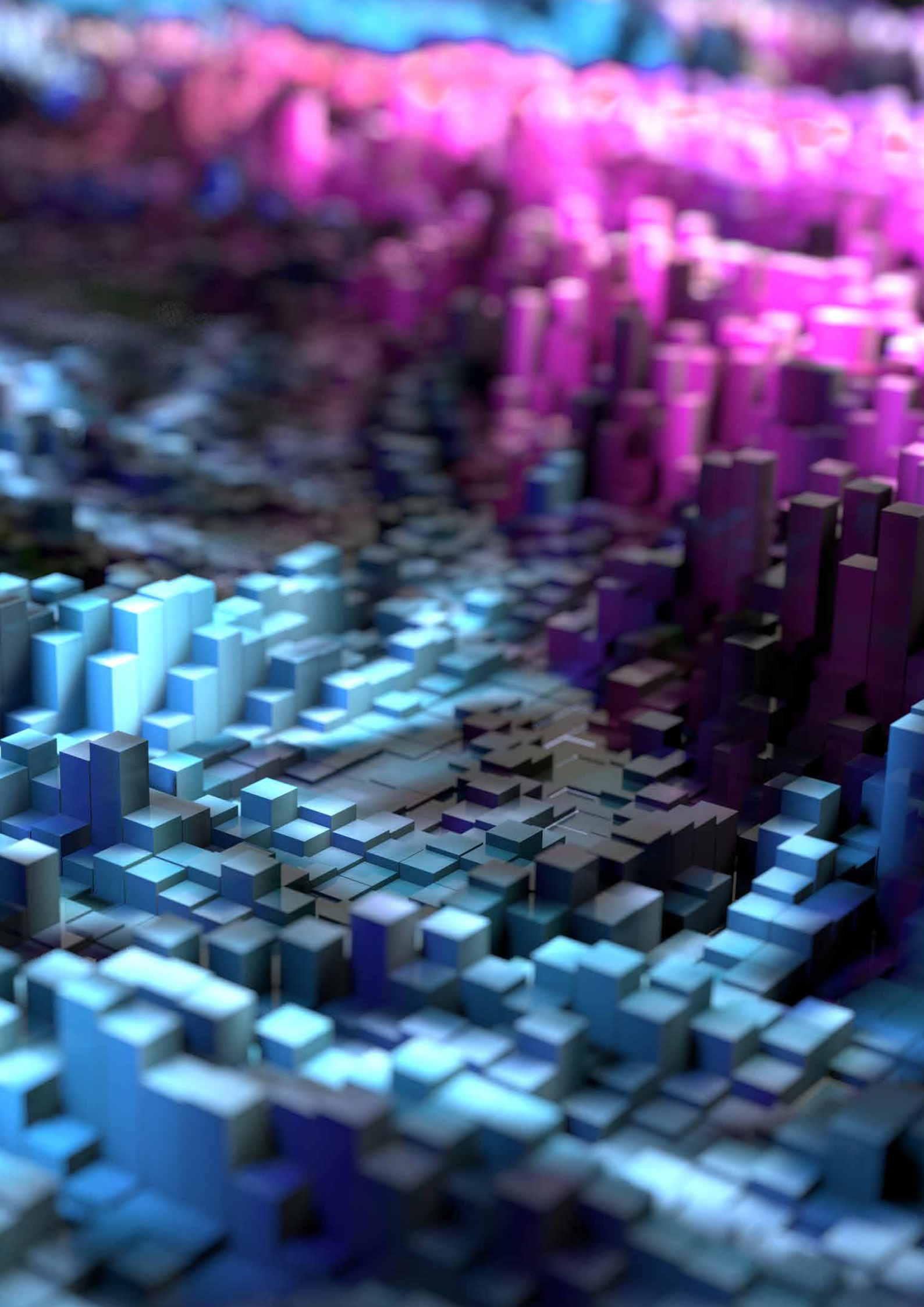


# TESTING INNOVATION

A Product Guide For JD Edwards EnterpriseOne





# TEST INNOVATION

In response to the demand for greater agility and continuous innovation amongst its user community, Oracle JD Edwards has adopted a strategy of continuous delivery.

This strategy is having an impact on the way organizations manage enterprise software change events, and how they go about testing.

At its heart, change involves risk and testing is all about managing and mitigating risk. Software testing acts like an insurance policy and is a key component of quality assurance.

Research shows that testing on enterprise software projects accounts for up to 65% of the overall time and effort. As companies move to stay code-current (once on release 9.2), projects will become smaller, less risky and more frequent. This change is driving demand for more efficient and effective ways to test.

DWS has responded to this changing landscape by developing a suite of innovative JD Edwards EnterpriseOne (JDE E1) testing solutions, all designed to help businesses transform the way they run projects; making them smaller, faster and smarter.

## How do you know what needs testing?

Without constraints, project teams would comprehensively test everything before handing a system over to end-users for acceptance testing. The problem is, resources and time are always constrained, and your end-users don't want to test everything. They only want to know what's changed, and they only want to test what needs testing.

At DWS, we believe there is a smarter way to test; one that starts with pinpointing and testing only those objects that are affected by a change event, such as an ESU or the modification of a standard program.

The difficulty in most E1 environments is that the software has been modified and personalized to meet specific business needs. These changes make planning and managing the testing that is required difficult.

Add this to the fact that you are likely to be running more projects (because of continuous innovation) and the testing task can seem daunting.

However, if you could better plan, manage and execute your testing, it would significantly reduce the time and effort required on every project.

So, we created Dimension Focus™, the impact analysis tool that allows users to determine exactly what needs testing and where to test.

## Adopting a more agile approach

Given the significant contribution testing makes to any upgrade, or more minor change event project, it is surprising how many organizations continue to rely on inefficient, manual processes.

Feedback from across the JDE user community indicated there was a perception that test automation was complex and would require specialist technical skills to execute properly.

In response, we created Dimension SwiftTest™ – JDE EnterpriseOne functional testing made easy.

## Reaching your potential

When dealing with ERP and other business-critical software applications, a lot of time and effort is spent on functional testing to ensure that systems perform as expected; that a given input results in a given output.

However, functional testing (i.e. unit, system and integration testing) alone is not enough to test the resilience and predictability of your system. Simply running a sequence of functional tests is not an accurate reflection of the real-world demands that are likely to be placed upon your systems.

That's why we developed Dimension LoadTest™ – enabling a single user to define, execute and monitor load in an E1 environment.



# DIMENSION FOCUS

Dimension Focus™ forensically analyzes ESU (Electronic Software Update) and modifications down to the event and function level. It utilizes bespoke dependencies logic to identify the top-level standard and custom objects that are affected by any change.

Dimension Focus takes impact analysis to new levels of insight by:

- Analyzing the impact on standard, copied and custom objects
- Grading the impact for each object by analyzing the dependencies at the event level and figures out the scale of the impact that applying the change has had on each top-level object
- Creating a testing “heat map” to show the level at which the applications are affected by the change event
- Enabling users to plan for those applications which require the most testing and, as importantly, those applications that are not affected, so require minimal testing

## Reduce overall testing effort by 75%



ESUs



Mods



Execution Point



Heat Map



JDE Menu



Shortest Path



Test User Assignment



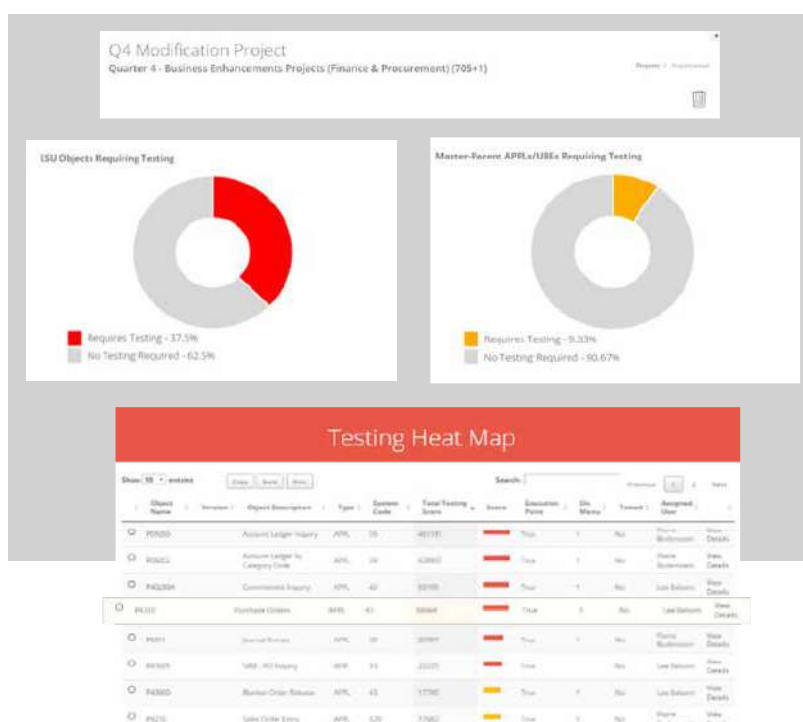
Impact Analysis



JDE Roles



The Linker





# DIMENSION SWIFTEST

Dimension SwiftTest™ is the only testing solution designed specifically for, and integrated with, JD Edwards EnterpriseOne. It has been designed with the non-technical business analyst and super-user in mind. It makes the creation, editing, scheduling and execution of testing as simple and efficient as possible.

Dimension SwiftTest accelerates and improves the quality of any E1 upgrade or code-current change event project by:

- Uniquely scanning technology to automate the generation of test scripts for all test scenarios
- Natively integrating with JDE E1, providing the easiest and quickest way to generate and edit test scripts for JD Edwards applications.
- Easily updating and editing test scenarios, unlike in traditional record and play products that require a whole sequence to be re-recorded each time a change is required
- Tracking the status of tests and their results
- Providing clear reporting on test results
- Pinpointing all test failures with user-friendly information regarding the reasons for the failures, so testers have everything they need to correct the issue
- Enabling drill-down to more detailed analysis of test results

## Save up to 60% on test execution



Mods



Business Process Changes



Code-Current Changes



Disaster Recovery



Enhancement ESU



Major Upgrades



Business Acquisitions



Security



Config



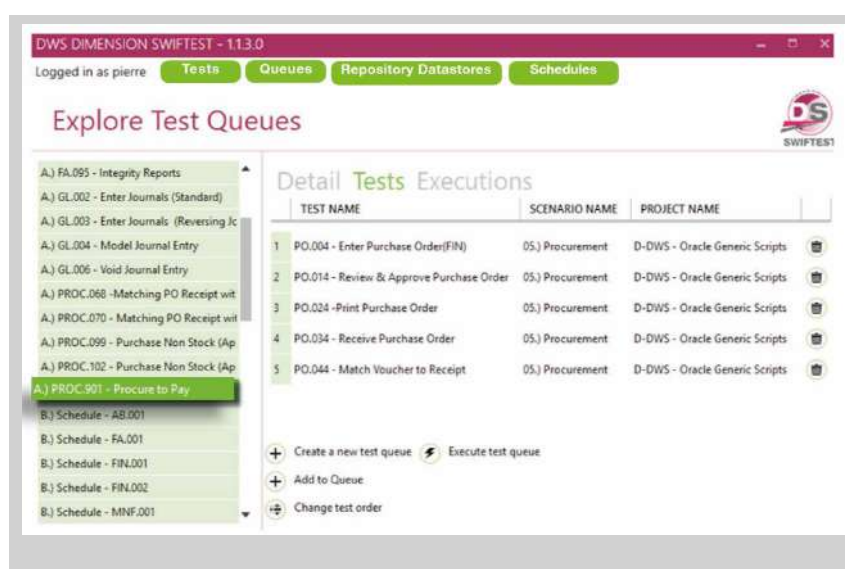
Critical ESU



Technology Foundation



Tool Upgrades



# DIMENSION LOADTEST

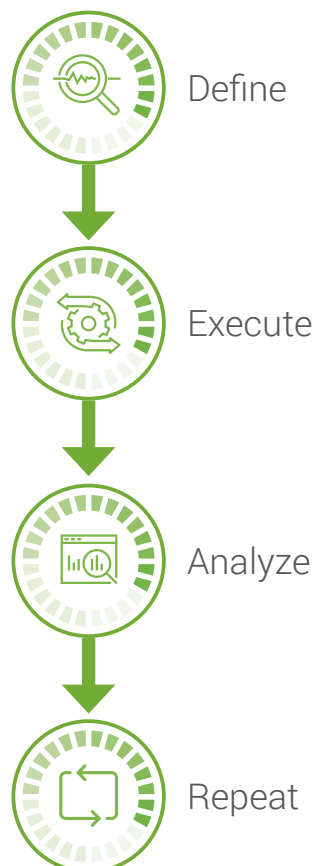
Dimension LoadTest™ is a powerful yet easy to use testing tool for the JD Edwards EnterpriseOne environment that allows customers to easily simulate load and do the work of hundreds of users in a fraction of the time.

DWS have designed Dimension LoadTest such that any experienced System Administrator/CNC can setup, create, run and monitor load tests to effectively stress test JD Edwards EnterpriseOne applications.

Dimension LoadTest allows users to go live with confidence by providing another level of quality assurance and risk management. LoadTest achieves this by:

- Working natively with JD Edwards EnterpriseOne
- Utilizing a very small footprint which can be installed in minutes
- Simulating large numbers of virtual users
- Allowing for cloud-based workloads anywhere in the world
- Employing sophisticated script building functionality
- Replicating a wide range of complex and sophisticated end-to-end business processes
- Employing a flexible and responsive SaaS model that is based on virtual user days

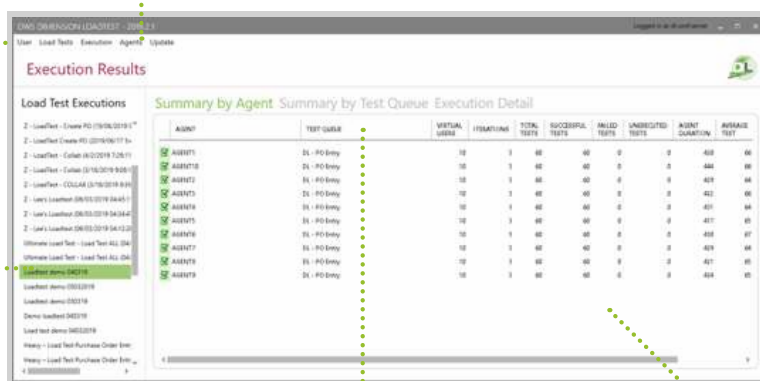
## Reduce overall test resource by 95%



Enables experienced systems administrators and CNCs to define the different loads as required

Tasks can run and repeat any time, allowing you to benchmark and improve

Agents can execute any combination of work across your environments, testing different functional areas concurrently



Load Test Executions		Summary by Agent		Summary by Test Queue		Execution Detail	
AGENT	TEST QUEUE	VIRTUAL USERS	ITERATIONS	TOTAL TESTS	SUCCESSFUL TESTS	FAILED TESTS	UNRECORDED TESTS
AGENT001	DL - PO Entry	10	3	60	60	0	0
AGENT010	DL - PO Entry	10	3	60	60	0	0
AGENT020	DL - PO Entry	10	3	60	60	0	0
AGENT030	DL - PO Entry	10	3	60	60	0	0
AGENT040	DL - PO Entry	10	3	60	60	0	0
AGENT050	DL - PO Entry	10	3	60	60	0	0
AGENT060	DL - PO Entry	10	3	60	60	0	0
AGENT070	DL - PO Entry	10	3	60	60	0	0
AGENT080	DL - PO Entry	10	3	60	60	0	0
AGENT090	DL - PO Entry	10	3	60	60	0	0


Business analysts and super users create test queues to define what work is being performed by the virtual users

Status updates can be accessed via an intuitive user interface while tests are being executed, delivering powerful insights









## About DWS

DWS is a leading provider of Oracle JD Edwards EnterpriseOne software services and products.

Since 1998, we have been providing development and technical services to organizations looking to customize, integrate, extend, upgrade or support implementations of EnterpriseOne. We also sell EnterpriseOne testing products that leverage our deep domain expertise and help customers run smaller, faster and smarter projects.

DWS serves a global client base using proven methodologies and proprietary DWS Dimension™ tools. Our best-practice approach and eye for detail help us deliver products and services that save time and money and continually drive down your TCO for JD Edwards.

**For further information please visit our website, or contact us:**

UK: +44 (0) 1494 896 600    US: +1 888 769 3248    ANZ: +64 (0) 9427 9956  
[sales@dws-global.com](mailto:sales@dws-global.com)    [www.dws-global.com](http://www.dws-global.com)

ORACLE

Gold  
Partner  
Cloud Standard