

DIMENSION

From DWS

ISSUE # 9



P.02

MAKING THE MOST OF CONTINUOUS INNOVATION

How adopting a process-driven approach allows you to make regular updates with less hassle and enjoy the benefits of Continuous Innovation.

P.03

10 WAYS TEST AUTOMATION ADDS VALUE TO YOUR BUSINESS

Discover how to improve the volume, quality and speed of functional testing with Dimension SwifTest.

P.03

DWS PERFORMS DEEP DIVE INTO UPDATE 5

Our insights into the JD Edwards EnterpriseOne Applications Release 9.2 Update 5 – with compelling results.

P.04

UPGRADE AUDIT & ESTIMATE TECHNICAL RETROFIT CASE STUDY

Learn how a renowned home décor company reduced the effort required for a JD Edwards 9.2 technical retrofit project.

MAXIMIZING THE BENEFITS OF CONTINUOUS INNOVATION WITH JDE 9.2

As more and more companies that use JD Edwards EnterpriseOne have moved to Release 9.2, the release that supports Continuous Innovation, they have more choice and control over their implementations than they ever had with prior releases. With 9.2, E1 truly has become enterprise application software for changing and evolving digital enterprises.

With this model of continuous delivery, enhancements to the 9.2 applications are made available as they are completed (as ESUs) and 9.2 updates are more frequent. Users can essentially choose which updates they want to make now and which they want to leave until their next project – supporting those users wanting to continuously innovate.

A greater degree of control over when an update is carried out doesn't eliminate the potential risk or disruption associated with any change event. Which is why it's important to mitigate the risk by checking what the impact of each update will be on your particular system set up. The value of an impact analysis and assessment cannot be underestimated.

The purpose of any analysis and assessment is to evaluate the change event's impact on the business, processes and downstream projects. Having established an accurate view of their modified footprint, users can then analyze every object, every line of code and every user setting/specification, down to a pixel movement level of detail.

The advantage of this forensic level of analysis is that organizations can ascertain a realistic timescale and budget for the subsequent update work to be carried out. Also, it becomes possible to create a predictable time and cost cadence for these code-current change events, which should be seen as regular maintenance rather than exceptional events.

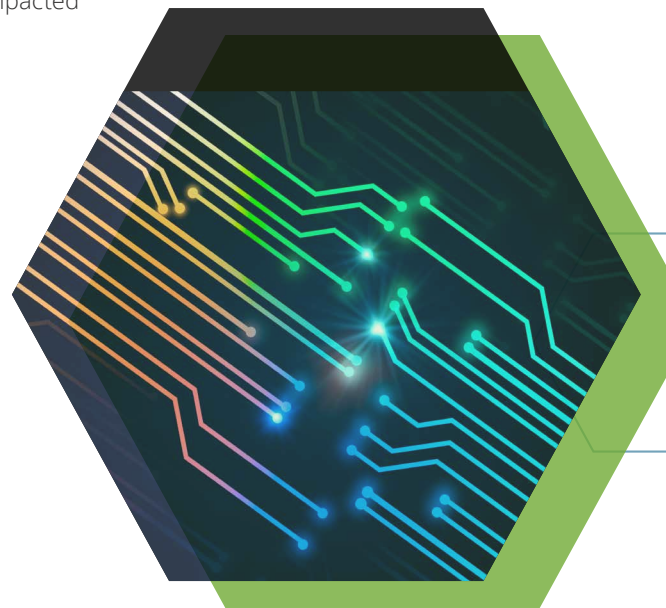
So Now What?

Now that you've completed and digested the findings from your impact analysis and assessment, the next step is to retrofit your custom code, based on the changes delivered by Oracle and your usage of the impacted objects.

At this stage, JDE customers can assess whether to outsource the planning and execution of the uplift or technical retrofit of any modified objects impacted by the updates. Engagement with a partner could be for a one-off project or as a repeatable service, whichever suits the business' requirements.

Working with a trusted 3rd party provider can provide access to years of experience and expertise in these types of projects. Benefits include guidance on how to make the most of the new features and enhanced functionality, ensuring you see a reduction in your modified footprint, mitigating risk and providing certainty with a project that will run on time and on budget.

Read the full blog and learn how DWS can support your Continuous Innovation strategy for JDE E1 9.2 here: <https://dws-global.com/maximizing-the-benefits-of-continuous-innovation-with-9-2/>



10 WAYS TEST AUTOMATION ADDS VALUE TO YOUR BUSINESS



In a digitally enabled world, where we have automated just about everything, it's somewhat surprising to find so many organisations still relying on manual testing. Automation can help improve all areas of testing, from script development to test execution, results analysis to defect monitoring.

Aside from the obvious – running tests faster - the repeatable nature of automated testing can deliver other benefits too. Here's an example: suppose a tester finds a bug. The developer fixes it but, on average, 7% of bug fixes create new bugs. Now you need to run the same test again, plus run tests on any dependent workflows. In a manual test environment, repeat testing often isn't replicated to the same standard each time, and testers may adopt the stance that the bug has been fixed and move on, without checking

for the impact on other areas. This can lead to a defect making it through to production, which is significantly more expensive to fix than if it was caught in the development or pre-production environment. Remember, prevention is better than cure!

Read the '10 Ways Test Automation Adds Value to Your Business' eBook to learn how DWS test automation products could help streamline and improve your functional testing' [here](#).

DWS PERFORMS DEEP DIVE INTO UPDATE 5 – WITH COMPELLING RESULTS

We've all heard the expression "No pain, No gain". While it's not universally accepted as a truism, it sprang to mind when I read the JD Edwards EnterpriseOne Applications Release 9.2 Update 5 announcement.

Whenever I hear about a new update or a new release of any software, I always think of the project that will need to be run in order to take advantage of the enhancements, additions and fixes. When I think of selling the project to the business, fitting the project into a busy schedule and mobilizing appropriate resource I think of the pain.

What if you could realize the benefits and make the gains associated with having the latest and greatest software without a lot of pain? If there is little or no pain associated with each update project, why aren't you running more of these projects?

These are questions you will have to answer for yourselves. In the meantime, we can provide you with some insights into the JDE E1 codebase and what's been happening in recent updates.

Understanding what's happening to the code is important, because changes to the code can be the source of a lot of pain. Your perception and expectations in respect of the pain will influence any decisions you take on whether you can, or even should, get and stay code-current.



A detailed understanding of what is happening to the Oracle code becomes invaluable as you move from contemplating the pain to implementing a plan.

Committing to a strategy of continuous innovation (underpinned by cost certainty and regular, low-risk code-current change event projects), enables JDE E1 users to avoid the pain and concentrate on the gains.

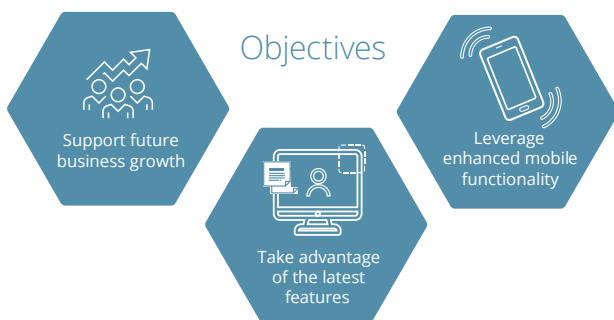
Read the full blog and learn how DWS supports updates and testing for JDE E1 9.2: <https://dws-global.com/dws-performs-deep-dive-into-update-5-with-compelling-results/>

JD EDWARDS 9.2 UPGRADE AUDIT & ESTIMATE TECHNICAL RETROFIT CASE STUDY

Our client is a renowned home décor company offering high quality decorative and functional hardware products distributed through retailers, home centers, and a network of distribution channels across the US.

The Challenge

Our client was looking to upgrade from XE to 9.2. With support for XE no longer available, and housed on outdated infrastructure, the business was exposed to unnecessary risk. The upgrade was also required to support the growing demands of the business, and to take advantage of the latest features from JDE E1.



Delivery

Working in partnership with a systems integrator, DWS was contracted to carry out a Dimension Analyze™ audit which included a full analysis of any modified objects in XE. The initial audit identified 2,406 raw objects, which we were able to reduce to just 1,328 that needed to be carried forward – reducing their modified footprint by 45%.

Result

Following the audit, DWS was asked to carry out a technical retrofit project as part of the wider upgrade. Based on the findings from the Dimension Analyze audit, DWS was able to identify the best upgrade approach. As a result, DWS were not only able to complete the retrofit project on budget, but 7 weeks ahead of schedule with zero defects reported, saving 125 development days.

To Learn how DWS Dimension Analyze and Dimension Professional helped reduce the time, effort and costs of this upgrade, view the full case study here: <https://dws-global.com/resources/jd-edwards-9-2-upgrade-audit-estimate-technical-retrofit-case-study/>



About DWS

Since 1998, we have been providing development and technical services to organizations looking to customize, integrate, extend, upgrade or support implementations of JD Edwards Enterprise One and Oracle Fusion Cloud Apps. We also sell EnterpriseOne testing products that leverage our deep domain expertise and help customers run smaller, faster and smarter projects.

DWS serves a global client base using proven methodologies and proprietary DWS Dimension™ tools. Our best-practice approach and eye for detail help us deliver products and services that save time and money and continually drive down your TCO for JD Edwards.

For further information please visit our website, or contact us:

UK: +44 (0) 1494 896 600 US: +1 888 769 3248 ANZ: +64 9427 9956
sales@dws-global.com www.dws-global.com

ORACLE

Gold
Partner
Cloud Standard