

DIMENSION

From DWS

ISSUE # 3



WHERE ARE YOU IN THE CURRENT JDE E1 LANDSCAPE?

P.02

We examine the results from the annual Quest JDE E1 community survey and review the current landscape in Q1 2019.

P.03

DWS UPGRADE SERVICES DELIVER FOR TREATT

See how our innovative Dimension Analyze™ service saved Treatt 31 days of development time as part of their upgrade to release 9.2.

P.03

TO PATCH OR NOT TO PATCH; THAT IS THE QUESTION

Following Oracle's Critical Patch Advisory Notice for January, we review the key considerations and current patching available.

P.04

GET CURRENT AND STAY CURRENT IN 2019

Explore the roadmap for JDE E1 and how to get the most from your investment in our new Get Current, Stay Current Best Practice Guide.

WHERE ARE YOU IN THE CURRENT JDE E1 LANDSCAPE?

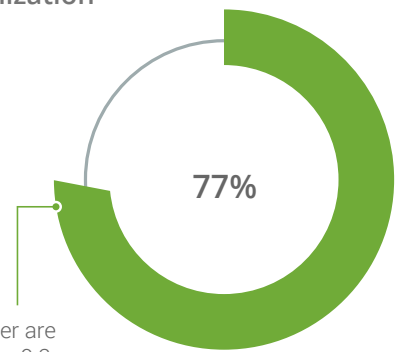
Another year has come and gone in the JD Edwards community and the EnterpriseOne installed base has continued its inexorable march towards code-current and the cloud. **Or has it?** We've heard from Oracle about the importance of cloud and the deployment of a continuous adoption model for EnterpriseOne, but what has the uptake been? Have the Oracle team's predictions proved accurate?

We spoke to a lot of committed JD Edwards customers in 2018 about their plans for JDE in the short to medium term, but it's always useful to gain a broader perspective. The annual Quest Community Survey was published towards the end of 2018 and provides some insight into the state of the JD Edwards landscape.

The survey is comprised of a representative sample of 850 users from across the JDE community, with many respondents coming from mid-level enterprise organizations, (between 1,000 and 10,000 employees) and allows us to identify some key trends.

If on 9.1 or older, is your organization planning to upgrade to 9.2?

77% of survey participants on 9.1 or older are planning to upgrade to 9.2.

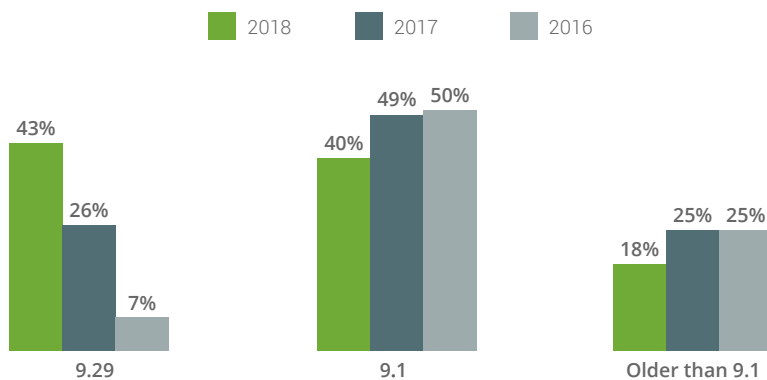


JDE EnterpriseOne release 9.2 was first introduced in October 2015. In April of 2017, Oracle announced it would be the last Applications Release, and that the support roadmap for 9.2 would extend to 2028 and beyond (which as of 2018 was extended to 2030 and beyond). Oracle continues to reaffirm its commitment to JDE, a model of continuous delivery, and support of continuous adoption. They are proactively encouraging users to **"get current and stay current"**.

In light of this, the research yielded some surprising results:

- More than half of the JDE E1 installed base are yet to upgrade to 9.2
- Whilst users recognize the value of new features like Orchestrator and UX One, they have not yet been widely adopted
- Migrating to the cloud doesn't appear to be a priority, with 90% of JDE instances remaining on-premise

What version of JD Edwards EnterpriseOne are you on?



It seems that many companies in the JDE community could be doing more to take advantage of the investment Oracle continues to make in EnterpriseOne.

What does 2019 have in store for you? Is it the year you get current by upgrading to 9.2, or is it the year you stay current by embracing continuous adoption?

View the full JDE Landscape infographic:

www.dws-global.com/resources

DWS UPGRADE SERVICES DELIVER FOR TREATT



Established in 1886, Treatt plc is a global, independent manufacturer and supplier of ingredients to the flavour, fragrance and consumer goods industries.

JDE E1 is used throughout Treatt's business, with over 100 concurrent users, and supported internally by a small, but growing, IT team.

Treatt has been a user of JDE E1 since 2004 and made the move to release 9.1 in 2015, determined to make the upgrade to release 9.2 ahead of a planned relocation to new offices.

Previous experience of major upgrades led Treatt to seek additional, external support for the technical uplift components of the project to help ensure the tight timelines and QA objectives were met.

The solution

After a period of review in the JDE community, Treatt chose DWS Global to be their upgrade partner.

DWS utilized its innovative Dimension Analyze™ solution to provide forensic analysis of Treatt's existing JDE E1 instance. This information allowed Treatt to identify a significant number of objects that would not require upgrading, saving an estimated 31 days in development time.



“With limited internal bandwidth, these 31 days would have been spread over several months. In reality, this has shortened the project timeline by months rather than weeks”.

Mark Rowland, Head of IT Development, Treatt plc

The result

Treatt contracted DWS to run a Dimension Professional™ technical retrofitting project. As part of this DWS was able to fix a price and time frame for the upgrade process. The subsequent technical retrofit was delivered on time and on budget, with an ultra-low 0.5% defect rate.

The development work carried out by DWS now means the system will be easier to manage as new ESUs arrive. Now on release 9.2, Treatt has a strong foundation to adopt a code-current strategy, allowing them to deliver smaller, faster and more frequent change events.

TO PATCH OR NOT TO PATCH; THAT IS THE QUESTION

Following Oracle's Critical Patch Advisory notice for January 2019 the age old question of 'to patch or not to patch' has re-emerged.

Because of its ability to support various platforms and configurations the picture is more complicated when patching EnterpriseOne and the underlying technology that it supports. This is due, in large part, to the complexity of the process and the specialist skills needed, and the evolving nature of JD Edwards.

With the increasing tendency to connect E1 to the Internet, and the existence of the Meltdown and Spectre bugs, it is perhaps timely to review your current patching available for JD Edwards EnterpriseOne.

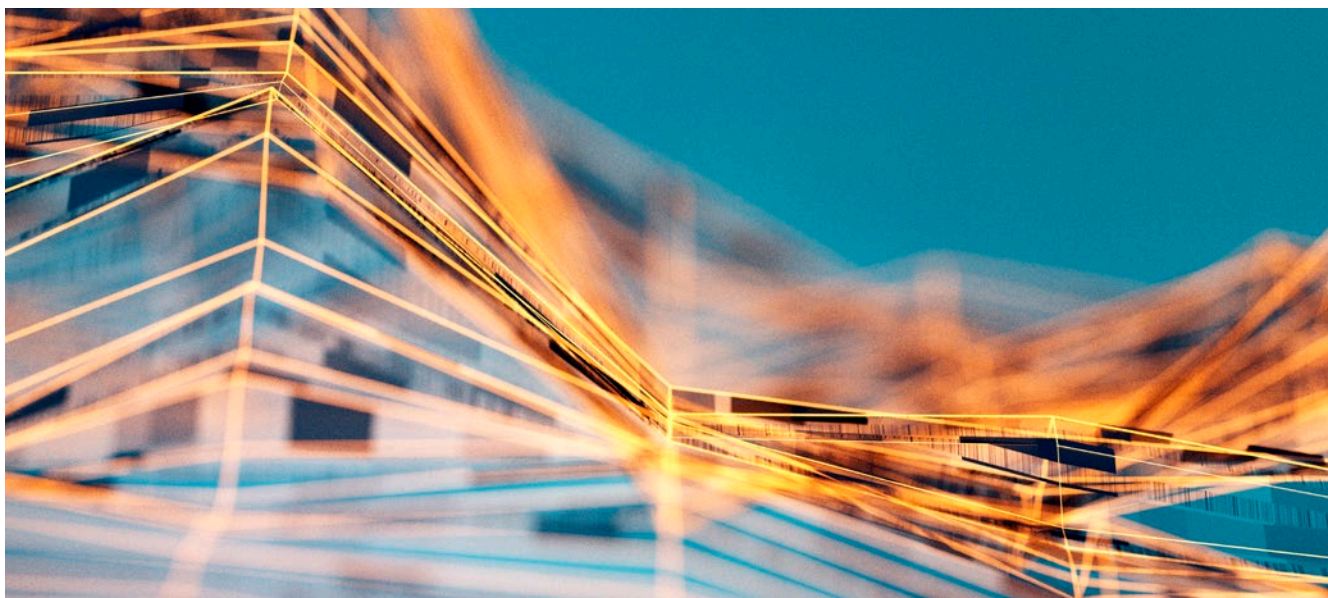
Here are some quick New Financial Year Patching Resolutions to keep in mind as you plan out your approach:

1. If you are not already receiving the email notifications for the Critical Patch Updates, then sign up now
2. Avoid downtime by using an E1 test system to load and test any patches before applying to the production system
3. Have a documented policy that assesses the risks of software vulnerabilities and put a procedure in place to address these critical updates.

Explore the latest JDE E1 patches, underlying technologies, critical fixes and planning approaches in more detail in the full article:

www.dws-global.com/jde-e1-patches-to-patch-question/





GET CURRENT AND STAY CURRENT IN 2019

In 2017, Oracle JD Edwards announced it would extend lifetime support for JDE EnterpriseOne release 9.2 until at least 2028; signalling an end to major product update releases and the beginning of a new era of continuous innovation and delivery. In 2018, Oracle re-affirmed its commitment to 9.2, extending support to 2030 and beyond.

With long-term support guaranteed, the JDE EnterpriseOne installed base is better placed to take advantage of the latest features available from new ESUs and Tools releases.

By getting current and staying current, digital enterprises can make smarter, faster decisions.

In our new Get Current, Stay Current Best Practice Guide, we take a deep-dive into the roadmap for users of

JD Edwards EnterpriseOne; examining the current JDE landscape, gauging the intent of users in terms of their adoption of new features.

'Get current, stay current' has become the mantra for many JDE users. This guide outlines the benefits of embracing continuous adoption and implementing a code-current strategy; including:

- Risk mitigation
- Lowering total cost of ownership
- Sustaining a long-term return on your investment in JDE

Despite the benefits of staying code-current, a significant number of customers are still using legacy versions of EnterpriseOne.

To understand why, we explore some of the common barriers to adoption in detail. We also identify some of the

tools available to help users address these challenges and facilitate a get current, stay current strategy.

We include two recent use cases that illustrate the effectiveness of these tools and highlight the significant savings in time and resource that can be achieved.

Finally, we look to the future and examine how a program of continuous delivery could change the way organizations deliver JD Edwards projects; making them smaller, faster and smarter.

If you're looking to get current in 2019, or looking for guidance on how to stay current and get the most from your 9.2 release, view the full guide:

www.dws-global.com/resources

About DWS

Since 1998, we have been providing development and technical services to organizations looking to customize, integrate, extend, upgrade or support implementations of EnterpriseOne. We also sell EnterpriseOne testing products that leverage our deep domain expertise and help customers run smaller, faster and smarter projects.

DWS serves a global client base using proven methodologies and proprietary DWS Dimension™ tools. Our best-practice approach and eye for detail help us deliver products and services that save time and money and continually drive down your TCO for JD Edwards.

For further information please visit our website, or contact us:

UK: +44 (0) 1494 896 600 US: +1 888 769 3248 ANZ: +64 9427 9956
sales@dws-global.com www.dws-global.com

ORACLE®

**Gold
Partner**
Cloud Standard