

# DIMENSION

From DWS

ISSUE # 7



P.02

## DWS INTRODUCES DIMENSION SWIFTEST FOR ORACLE CLOUD APPLICATIONS

DWS has taken its innovative test automation solution, Dimension SwiftTest, and re-authored it for use with Oracle Cloud Applications.

P.03

## INTRODUCING CODE-CURRENT-AS-A-SERVICE

For JDE customers that have embraced the continuous delivery model, code-current-as-a-service represents a new level of support.

P.03

## PERFORMANCE TESTING, A NECESSARY EVIL

Organizations planning to go live after running JDE E1 projects see the value in simulating load to performance test their systems.

P.04

## TYNEDALE SAVES UP TO 75% ON TESTING

Discover how Tynedale House Publishers are leveraging Dimension Swifttest to generate significant savings on functional testing.



# DIMENSION SWIFTEST FOR ORACLE CLOUD APPLICATIONS

Introduced in 2016, SwiftTest was the first test automation solution designed for Oracle JD Edwards EnterpriseOne. Created with the non-technical user in mind, SwiftTest significantly reduces the time and effort associated with functional testing.

It is the easiest way to set up and execute tests without the need for specialist test engineers or programmers. For the first time, Business Analysts and Super-Users were able to take ownership of test automation.

**Since its introduction, SwiftTest has consistently helped project teams reduce the resource burden of functional testing by anything up to 70%.**

In the past five years, we have seen a significant move amongst the Oracle and JD Edwards communities towards a cloud-first strategy.

Oracle's own JDE cloud strategy is hybrid by design, supporting customers on their personal journeys to the cloud.

As more JDE workloads are migrated to the cloud, SwiftTest has been used to significant effect, helping organizations deliver smaller, faster, smarter projects. The move to adapt SwiftTest to support a broader range of Oracle Cloud Applications was the logical next step in the software's evolution.

Anyone responsible for the functional testing on a project to implement, update or change their applications can use SwiftTest without the need to get involved with technical scripting tools.

Unique scanning technology is used to automate the generation of test scripts for all test scenarios. These scenarios can be edited quickly and easily, unlike with traditional record and playback functionality.

Test managers and lead testers can access the SwiftTest dashboard in the cloud, providing a single overview of all testing activity. Test progress and results can be viewed at a project or scenario level, or users may take a deep dive into individual tests.

For further information, visit the [Dimension SwiftTest for Oracle Cloud Applications product page](#).



# LET'S TALK ABOUT CODE-CURRENT-AS-A-SERVICE

**A**s a service' propositions have become commonplace with organizations choosing to outsource the delivery of strategic technology services. These propositions have largely replaced the high CAPEX approaches of the past, allowing decision-makers to implement and maintain an ever-increasing portfolio of business-critical applications as a managed service.

For JDE E1 customers, code-current as a service (CCaaS) represents a new level of support from the JDE community. It is a proposition that is designed for organizations that have embraced the concept of continuous delivery and are looking to evolve and innovate.

To support a strategy of continuous innovation one needs to bring together a broad portfolio of capabilities.

These should include, but not be limited to:

- End user support
- CNC services
- Infrastructure management
- Ad hoc development services
- Code-current retrofitting services
- Functional and performance testing

Discover more in our guide: **Realizing Value Through Code-Current-as-a-Service**



## PERFORMANCE TESTING, A NECESSARY EVIL

**P**eople running JDE E1 projects and preparing to go live see the value in simulating load to performance test their systems. Why wouldn't they? Especially when it can be done so easily and cost effectively.

Most of the LoadTest enquiries we get are from entities that are running big projects where they are changing the infrastructure on which JDE E1 is running.

Exactly what they want to test, and what they want to determine as a result of their testing, varies widely. However, what they have in common is a desire to prove that their new infrastructure is robust and resilient enough to do the job. They want to create load, simulate realistic demand, mitigate risk – They want to test!

Occasionally, the driver for this kind of testing is to establish if changes to software will result in a degradation of applications' performance. After all, many of us will have been caught out over the years by an unexpected impact on performance following a change event.

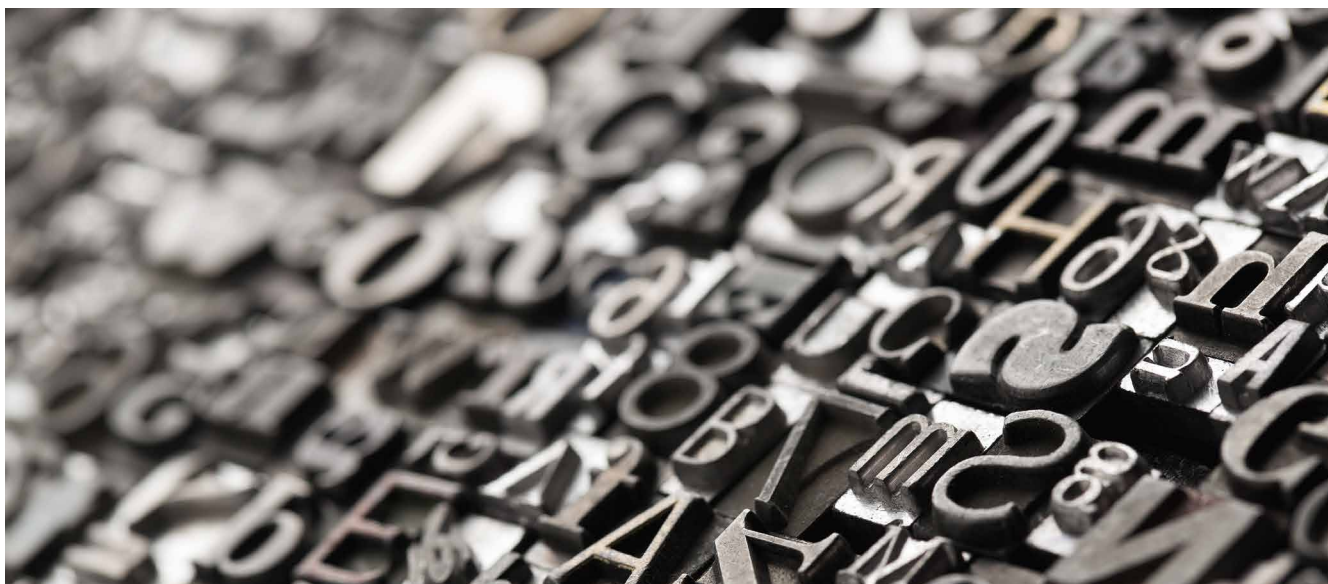
It is surprising that most companies are yet to invest in solutions that allow them to create different kinds of load and to understand the impact of every change event project. Especially when doing so can prove invaluable in finding and fixing issues rapidly.

We believe that to keep your system performing at its peak, testing with significant, realistic loads should be closer to the top of everyone's to-do list.

Discover more about **Performance Testing solutions from DWS**







## TYNEDALE SAVES UP TO 75% ON TESTING

**L**ocated in Carol Stream, Illinois, Tyndale House Publishers was founded in 1962 by Dr Kenneth N Taylor. The employs 250 people and publishes the NLT Bible, plus a range of fiction, non-fiction, and children's books.

JDE E1 is fully integrated into Tyndale, with up to 70 concurrent users utilizing AP, AR, Inventory Management, Procurement, GL, Warehousing, Transportation and Expense Management and Sales Order Management modules. Third-party integrations include CRM, CDI (website) and RF Smart for pick and pack, plus integration with freight forwarding and logistics.

### The challenge

With a small internal team of two dedicated to JDE support, testing could be time consuming.

Rather than depending upon ordinary users to support quality assurance (QA), Tyndale was looking to automate as much of the process as possible.

In anticipation of further systems development, and a potential upgrade to JD Edwards EnterpriseOne 9.2 (JDE E1 9.2), Tyndale needed to find a way to reduce the burden of testing during any future change event project.

### The solution

Having assessed the alternatives, Tyndale implemented DWS Dimension Focus™ to support test planning and DWS Dimension SwifTest™ for test automation.

### The Results

Use of Dimension Focus has resulted in better test planning and eliminated wasted effort on objects that don't need testing.

The adoption of SwifTest has had a significant impact on both continuity and productivity; saving Tyndale up to 75% on the time taken to execute complex functional testing.

**“We took SwifTest because we really wanted the test automation, but we also liked Focus because it helped us to better understand what needed testing.”**

Adam Rispens, Systems Analyst, Tyndale

[Read the case study in full.](#)

## About DWS

Since 1998, we have been providing development and technical services to organizations looking to customize, integrate, extend, upgrade or support implementations of EnterpriseOne. We also sell EnterpriseOne testing products that leverage our deep domain expertise and help customers run smaller, faster and smarter projects.

DWS serves a global client base using proven methodologies and proprietary DWS Dimension™ tools. Our best-practice approach and eye for detail help us deliver products and services that save time and money and continually drive down your TCO for JD Edwards.

For further information please visit our website, or contact us:

UK: +44 (0) 1494 896 600    US: +1 888 769 3248    ANZ: +64 9427 9956  
[sales@dws-global.com](mailto:sales@dws-global.com)    [www.dws-global.com](http://www.dws-global.com)

ORACLE®

Gold  
Partner  
Cloud Standard